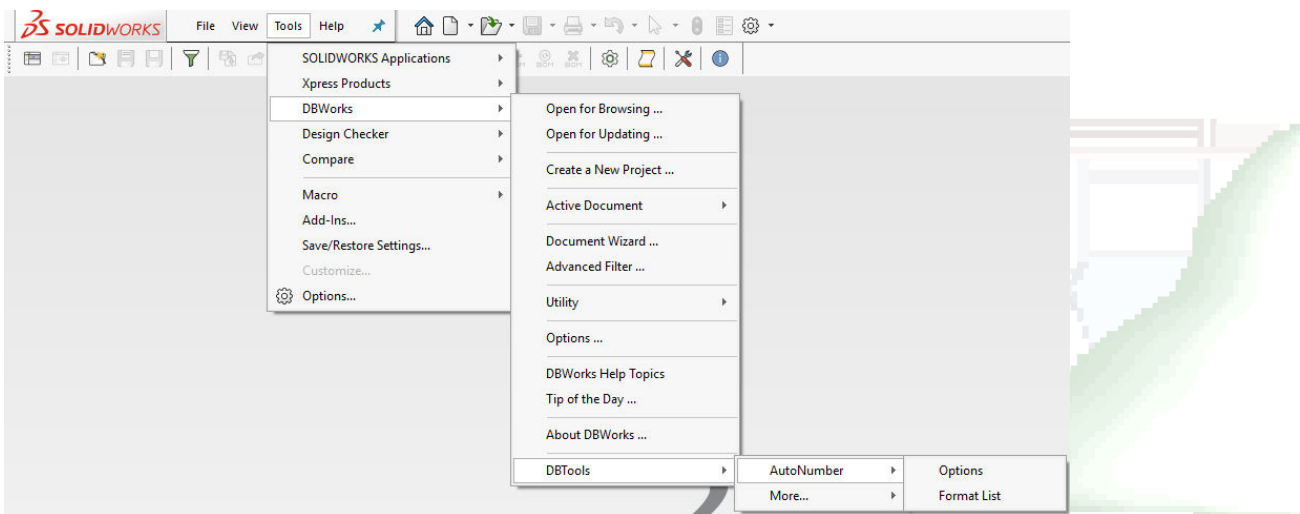


Upgrading to MWAutoNumber

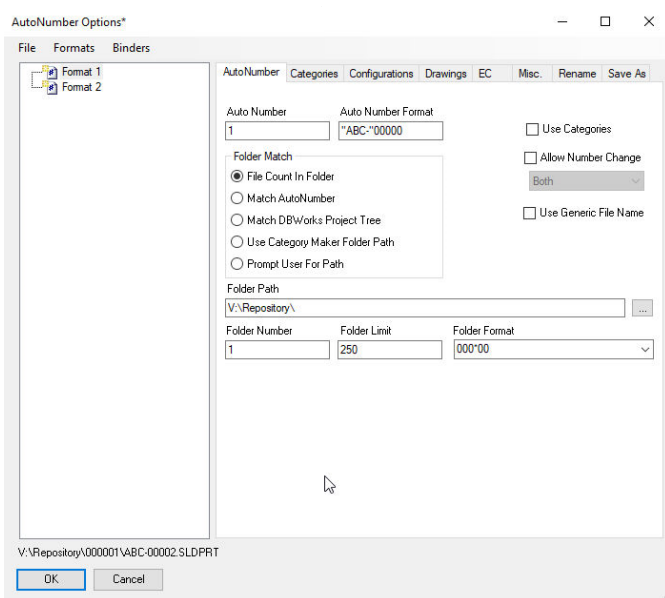
If you are currently running DBTools AutoNumber (AutoNumber only) then upgrading to MWAutoNumber is likely the best option. DBTools is no longer being developed so reporting bugs/enhancements will no longer be accepted or fixed in DBTools.

How do I know if I am running DBTools AutoNumber?

Customers that run DBTools will find the DBTools add-in in the SolidWorks Tools-> DBWorks -> DBTools pull down menu:



Choosing the **Options** command from DBTools -> AutoNumber will display your current Format List:

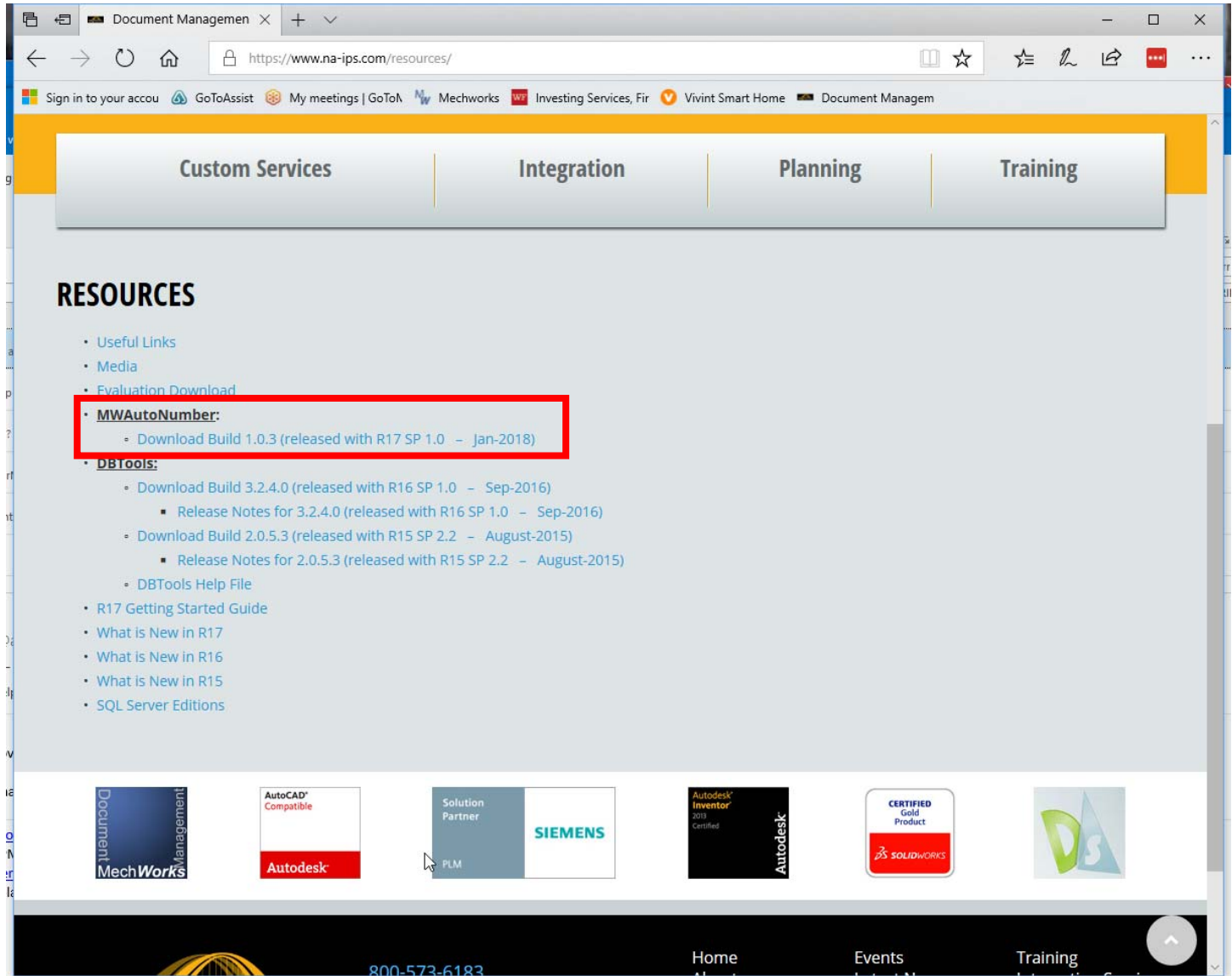


Upgrade to MwAutoNumber:

Prior to doing any upgrade, a backup of the shared ...\\MechWorks_Pdm_Server\\ folder should be done.

All workstations are required to be updated to the new MWAUTONUMBER.

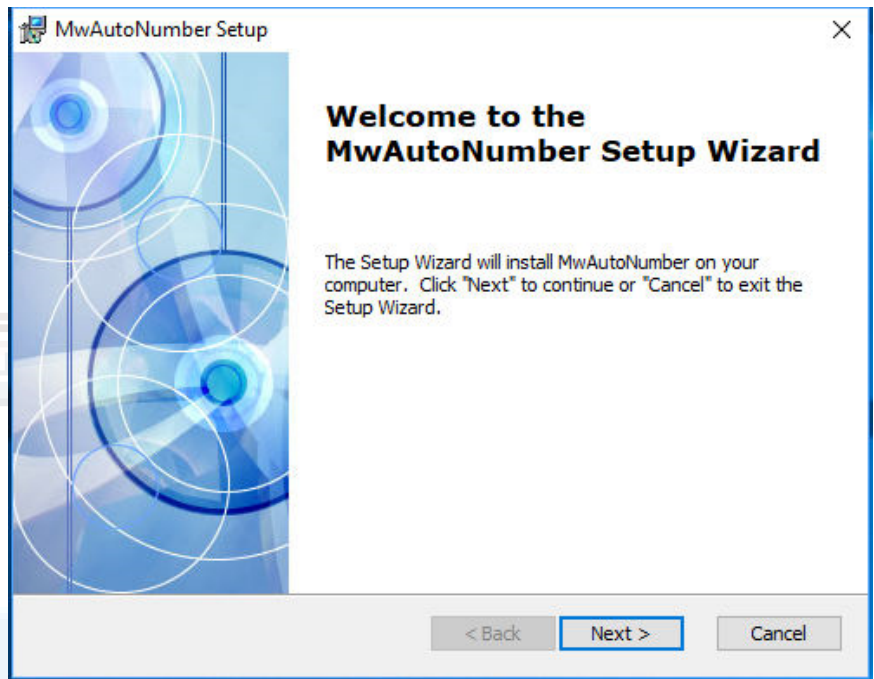
1. Download the MWAUTONUMBER installation file from the <https://www.na-ips.com/resources/> website.



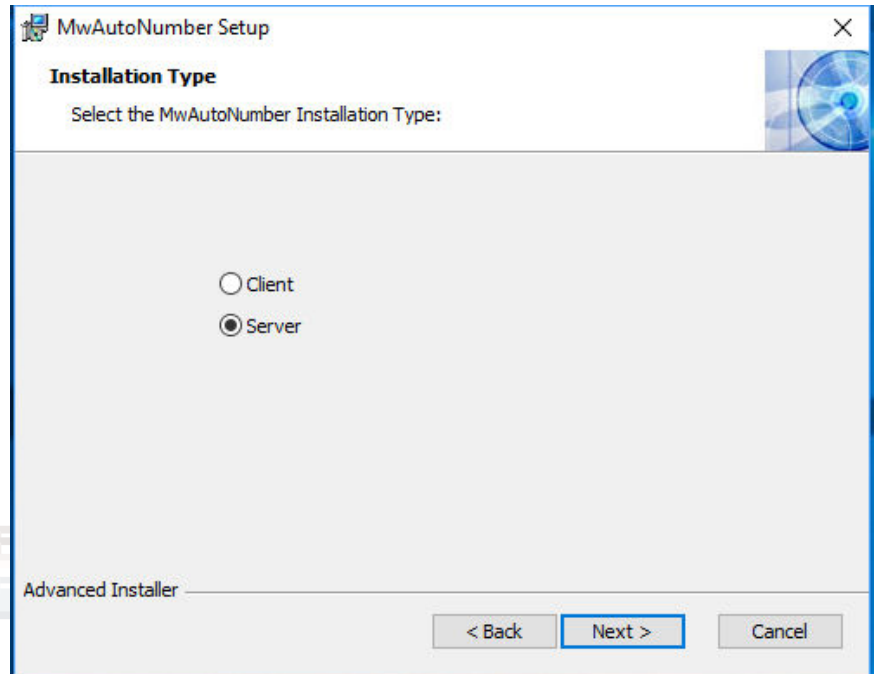
The screenshot shows a web browser window displaying the 'RESOURCES' page of the Integrated Partner Solutions website. The page has a navigation bar with 'Custom Services', 'Integration', 'Planning', and 'Training'. Below the navigation bar, the 'RESOURCES' section lists various links. A red box highlights the 'MwAutoNumber' link, which includes a sub-link for 'Download Build 1.0.3 (released with R17 SP 1.0 - Jan-2018)'. Other links include 'Useful Links', 'Media', 'Evaluation Download', 'DBTools', 'R17 Getting Started Guide', 'What is New in R17', 'What is New in R16', 'What is New in R15', and 'SQL Server Editions'. The footer of the page features logos for Document Management MechWorks, AutoCAD Compatible Autodesk, Solution Partner PLM SIEMENS, Autodesk Inventor 2013 Certified Autodesk, CERTIFIED Gold Product SOLIDWORKS, and a 'Ds' logo. The footer also includes the phone number 800-573-6183 and links for Home, Events, and Training.

2. Extract the MwAutoNumber.MSI installation file on the workstation and run. Keep in mind you must have local administrator permissions to perform the installation and the mapped drive to the shared ...\\MechWorks_Pdm_Server\ folder must be present.

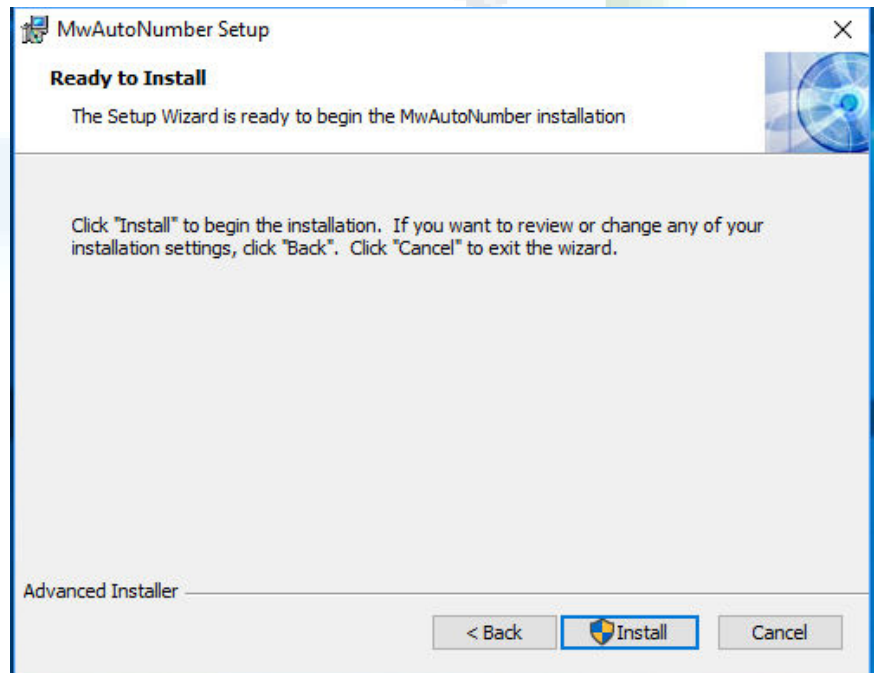
3. Follow the installation wizard.
Choose **Next>** to begin.



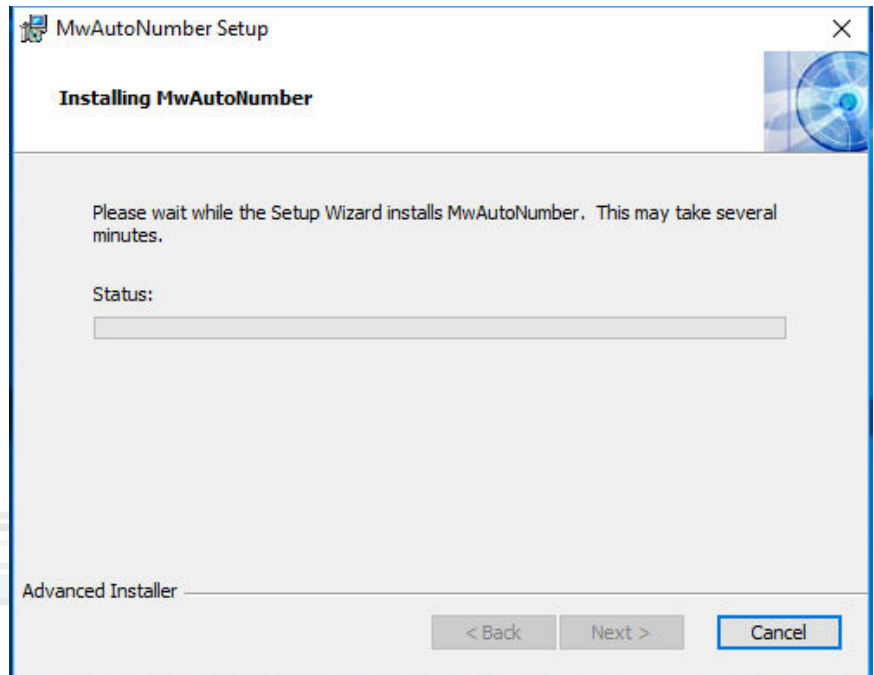
- On the first workstation that is being updated choose the **Server** installation. This is only required on the first workstation upgraded to MWAutoNumber. All other installations from this period moving forward should be **Client** installations. Choose **Next>** to continue.



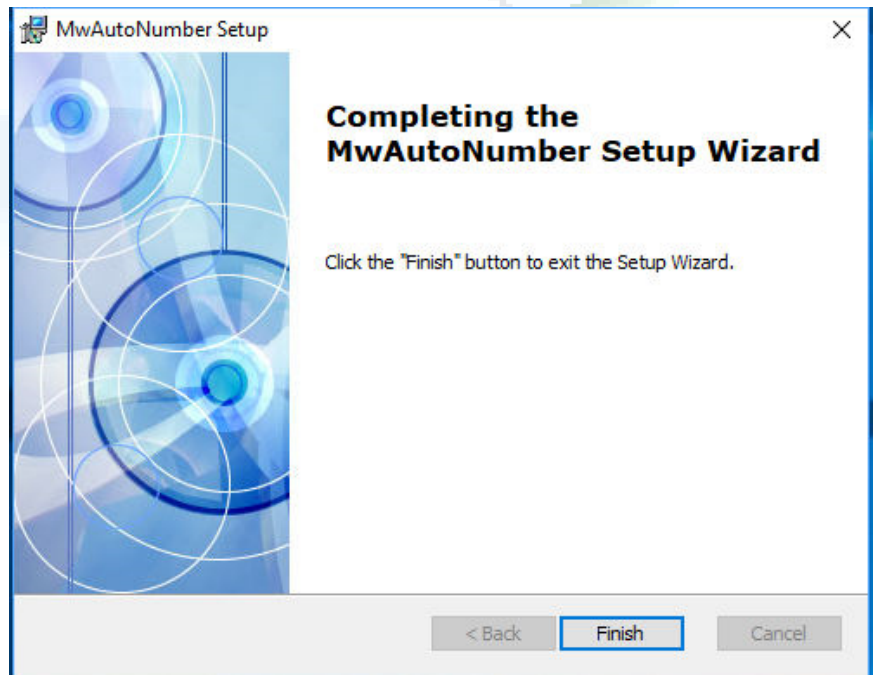
- Choose the **Install** button to continue.



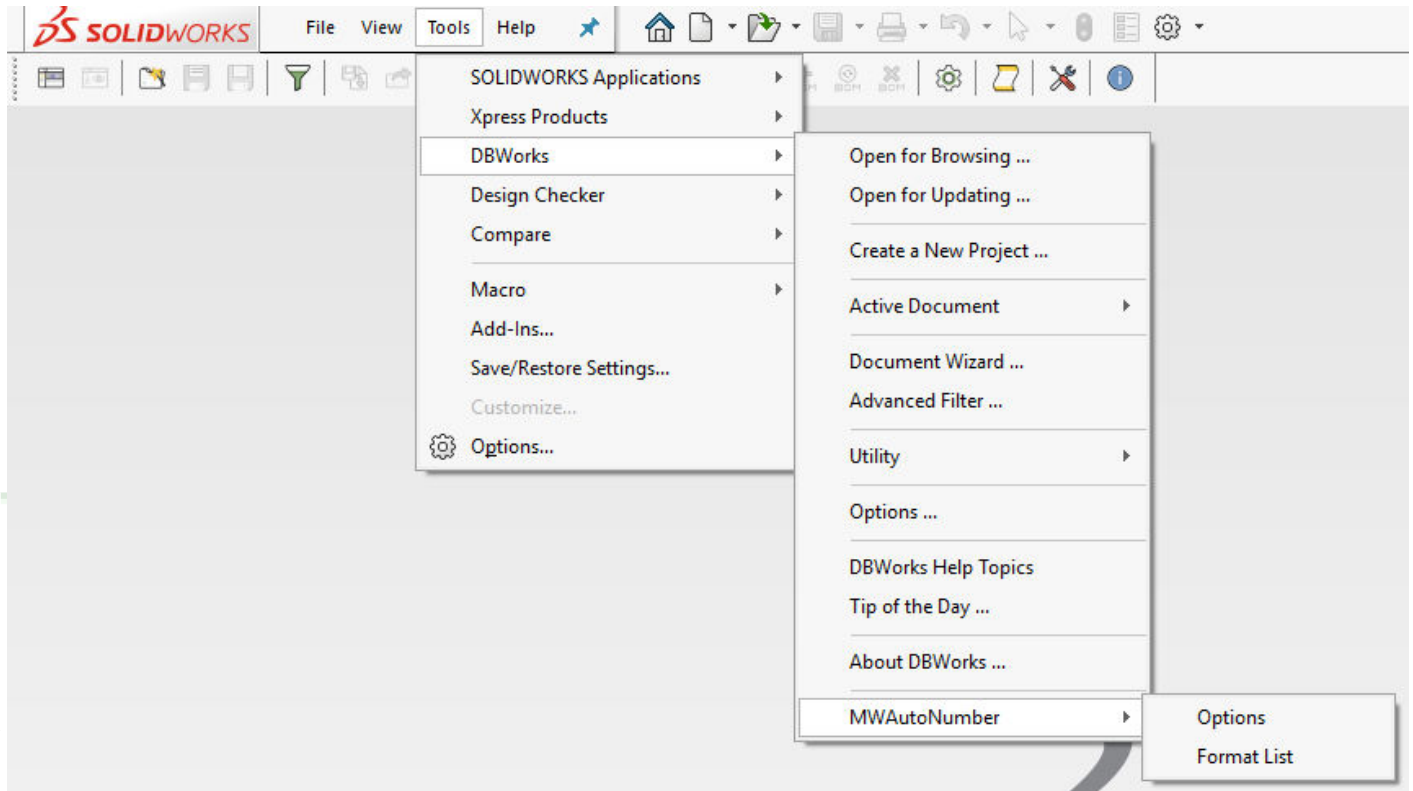
- The installation wizard will display the status of the install.



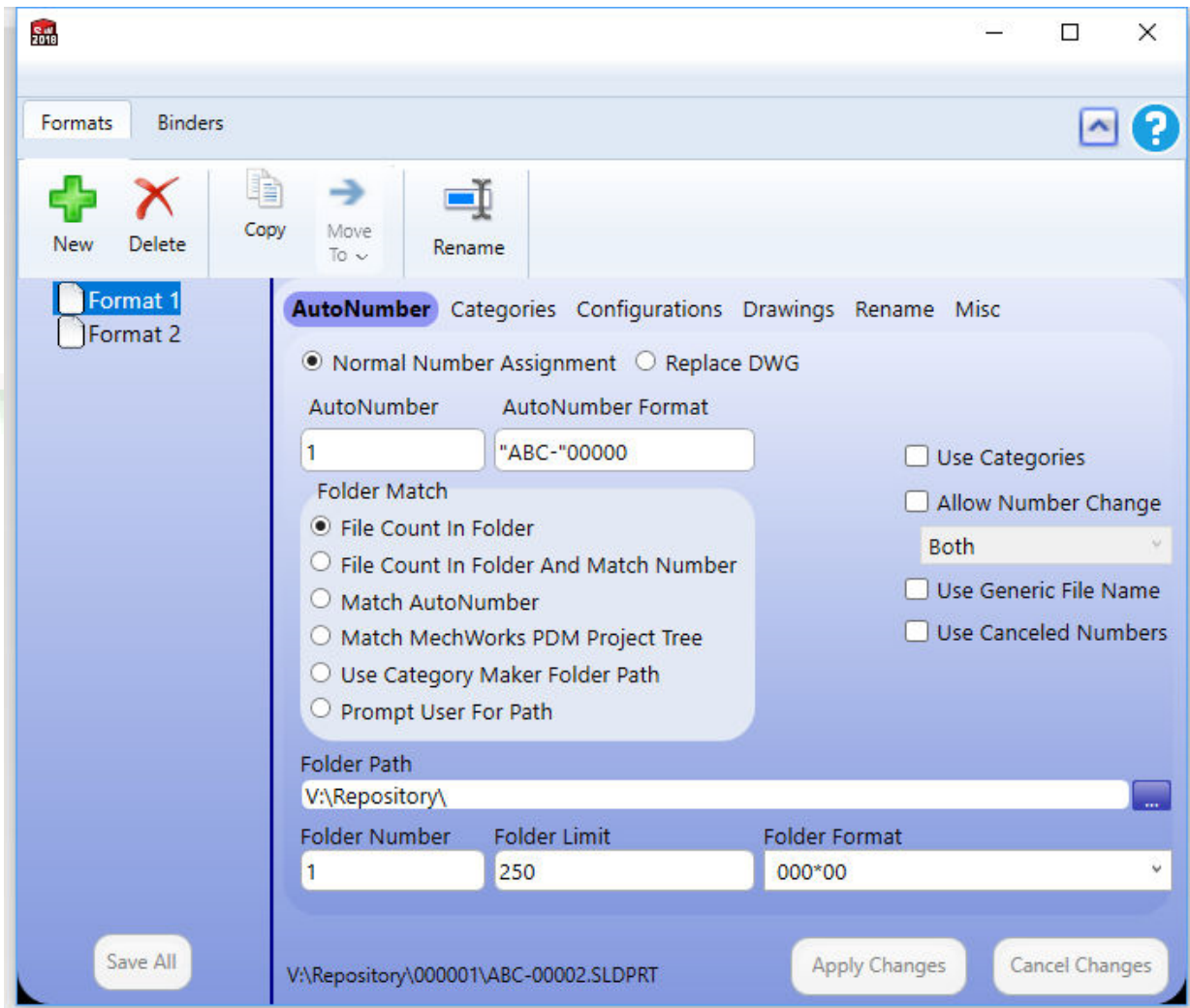
- Once complete, choose the **Finish** button and open SolidWorks with DBWorks active.



8. In SolidWorks choose the **Tools -> DBWorks -> MWAutoNumber -> Options** command.



9. The format list will be displayed, like what DBTools had.



After the installation is complete, it is now safe to un-install DBTools.

To recap:

- You must have local administrator permissions.
- Backup the shared ...\\MechWorks_Pdm_Server\\ folder.
- The first workstation requires the **Server** installation type while all other workstations should use the **Client** installation.