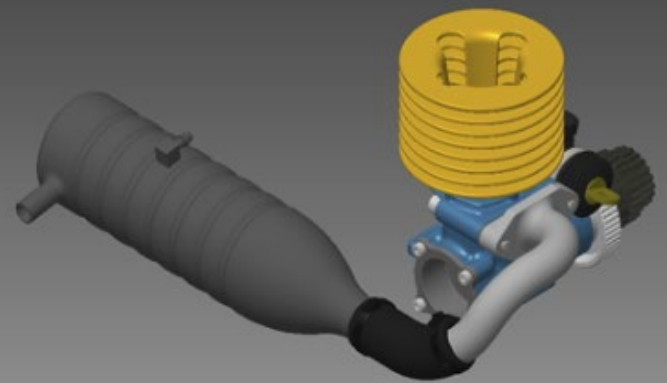
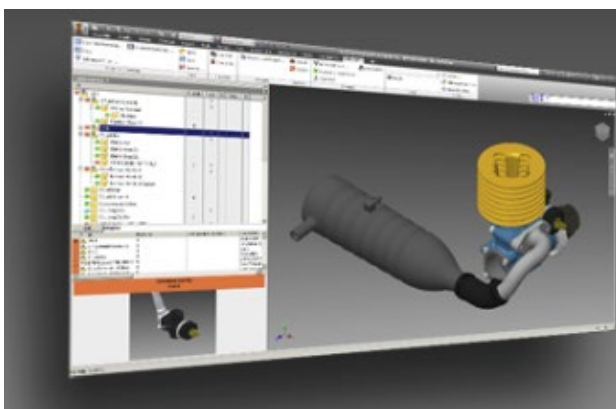
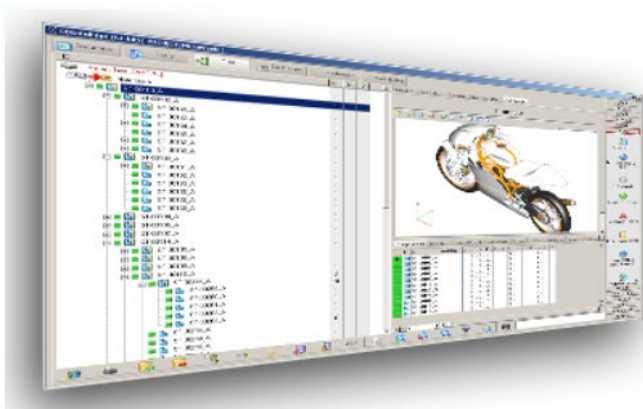


MechWorks PDM MWEngineeringChange Silent Installation



Silent Installations

The **MWEngineeringChange.msi** installer package is a standard Windows Installer package, so it is compatible with default msiexec.exe command line parameters, as documented in the link below:

<https://www.advancedinstaller.com/user-guide/msiexec.html>

Installing the Client Only

To install only the Client version, the command line should be similar to the following:

```
Install MWEngineeringChange.bat x
1 "M:\MechWorks_Pdm_Server\Downloads\MwEngineeringChange.msi" /qb
2
```

- **"M:\MechWorks_Pdm_Server\Downloads\MWEngineeringChange.msi"**
 - The first parameter should be the full path to the .msi installer in quotes.
- **/qb**
 - The second parameter should be /qb, which tells Windows Installer to install the .msi in quiet (basic) mode

Installing the Client+Server

To install the Client+Server version, the command is the same as outline above with the added parameter **RADIOBUTTONGROUP_1_PROP_1="btnClientAndServer"** at the end:

```
Install MWEngineeringChange - Client And Server.bat x
1 "M:\MechWorks_Pdm_Server\Downloads\MwEngineeringChange.msi" /qb RADIOBUTTONGROUP_1_PROP_1="btnClientAndServer"
2
```

- **"M:\MechWorks_Pdm_Server\Downloads\MWEngineeringChange.msi"**
 - The first parameter should be the full path to the .msi installer in quotes.
- **/qb**
 - The second parameter should be /qb, which tells Windows Installer to install the .msi in quiet (basic) mode
- **RADIOBUTTONGROUP_1_PROP_1="btnClientAndServer"**
 - The third parameter tells Windows Installer to behave as if the radio button for the **"Client+Server"** version was selected.

Uninstalling MWEngineeringChange

To uninstall MWEngineeringChange, the command line should be similar to the following:

```
Uninstall MWEngineeringChange.bat x
1 msiexec.exe /x "M:\MechWorks_Pdm_Server\Downloads\MwEngineeringChange.msi" /qb
2
```

- **msiexec.exe /x**
 - The first parameter should be msiexec.exe /x, which tells Windows Installer to uninstall the specified .msi package
- **"M:\MechWorks_Pdm_Server\Downloads\MWEngineeringChange.msi"**
 - The second parameter should be the full path to the .msi installer in quotes.
- **/qb**
 - The third parameter should be /qb, which tells Windows Installer to uninstall the .msi in quiet (basic) mode